

DT 1250-800

DT Range: 9 kHz - 1000 MHz / 1250 W CW - 800 W CW



Prana DT 1250-800

- Class A solid state
- Broadband (instantaneous dual band): 9 kHz – 1000 MHz
- Frequency extension between 4 kHz and 9 kHz upon request
- Typical output power :
 - 1250 W CW (9 kHz – 150 MHz) and
 - 800 W CW (150 MHz – 1 GHz)
- Linear output power (1 dB compression) guaranteed with harmonics <-20 dBc:
 - P1dB > 900 W and H<-20 dBc at 9 kHz
 - P1dB > 1000 W and H<-20 dBc from 10 kHz to 20 kHz
 - P1dB > 950 W and H < -20 dBc from 20 kHz to 150MHz
 - P1dB and H < -20 dBc from 150MHz to 1000MHz
- Air cooling: self contained fans
- Can operate in full mismatch conditions without damage
- Reliable, efficient and robust
- 19" Cabinet on wheels
- 3 years standard warranty

Maintenance

- Amplifier designed for minimal maintenance
 - Easy access to all parts
 - Modular design
 - Repairs with minimum adjustments
- Rapid diagnostic
- Minimal downtime
- Contract for preventive and corrective maintenance available

Applications

- EMC tests
- RF tests and instrumentation
- Radiocommunication
- Measurement and research laboratories

Versions

- DT 1250-800 DC amplifier with:
 - Multicolor LCD display with touch panel
 - Digital control
 - IEEE 488 GPIB, Ethernet, USB, RS232 communications
 - Temperature controlled fans
 - Safety interlock
 - Integrated dual directional coupler
 - Display of instantaneous incident and reflected power

DT Range

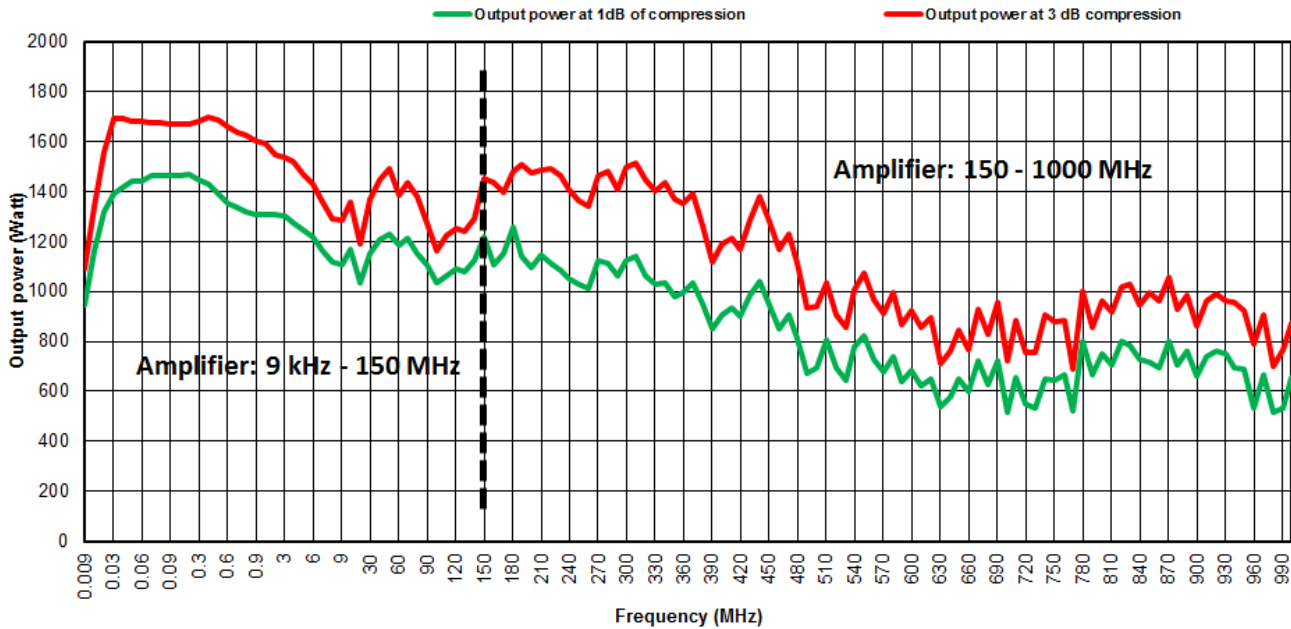
- DT 30 => 30 W CW
- DT 90 => 90 W CW
- DT 180 => 180 W CW
- DT 90/130 => 90 W CW - 130 W CW
- DT 170/130 => 170 W CW - 130 W CW
- DT 310/220 => 310 W CW - 220 W CW
- DT 1250-800 => 1250 W CW - 800 W CW

Extra

- External coupler
- Bulk Current Injection + Calibration JIG
- RF Power cable

DT 1250-800

DT Range: 9 kHz - 1000 MHz / 1250 W CW - 800 W CW



Specifications

Frequency bandwidth	9 kHz - 150 MHz / 150 MHz – 1000 MHz
Typical output power	1250 W / 800 W
Power at 3 dB compression	1kW min at 9 kHz/1.2kW min 10-20kHz/1.1kW min 20kHz-150MHz/600W min 0.15-1GHz
Power at 1 dB compression	900W min at 9 kHz/1kW min 10-20kHz/950W min 20kHz-150MHz/450W min 0.15-1GHz
Harmonics distortion	H2,H3 < -20 dBc for the output power at 1 dB compression limit
Class type	Class A
Gain	56 dB
Linear power gain flatness	± 3.5 dB max
Mismatch tolerance	infinite without damage
Input impedance	50 ohms / VSWR: 2:1 max
Output impedance	50 ohms / VSWR: 2:1 max
Input power	+10 dBm max.
RF input connector	Type N fem. (front or rear panel) – other connector type on request
RF output connector	Type 7/16 fem. (front or rear panel) – other connector type on request
Integrated 2 bidirectional power couplers	Coupling factor 59 dB typ.
Power coupling connector	Type N fem. (front or rear panel)
Safety interlock	Connector type BNC
Digital control	Transistors, power supplies, temperatures and fans
Mismatch protection	Self limitation for reflected power > 500 W
Communication interface	Ethernet, USB, GPIB, RS232
Color LCD display with touch screen	Status, faults, direct and reverse instantaneous power
Ambient operating temperature	0 °C / + 35 °C
Room temperature storage	-20 °C / +70 °C
Cooling	Forced air with fan speed control: 240 l/sec max (self contained fans)
Mains voltage	47-63 Hz, 3 phases (star or delta)
Rated current	5.4 kVA
Dimensions	600 x 840 x 1500 mm (30U) / 23.6 x 33.1 x 59.1 in (28U)
Weight	360 kg / 794 lb

4TECT

ООО «4TECT»
 Телефон: +7 (499) 685-4444
 info@4test.ru
 www.4test.ru